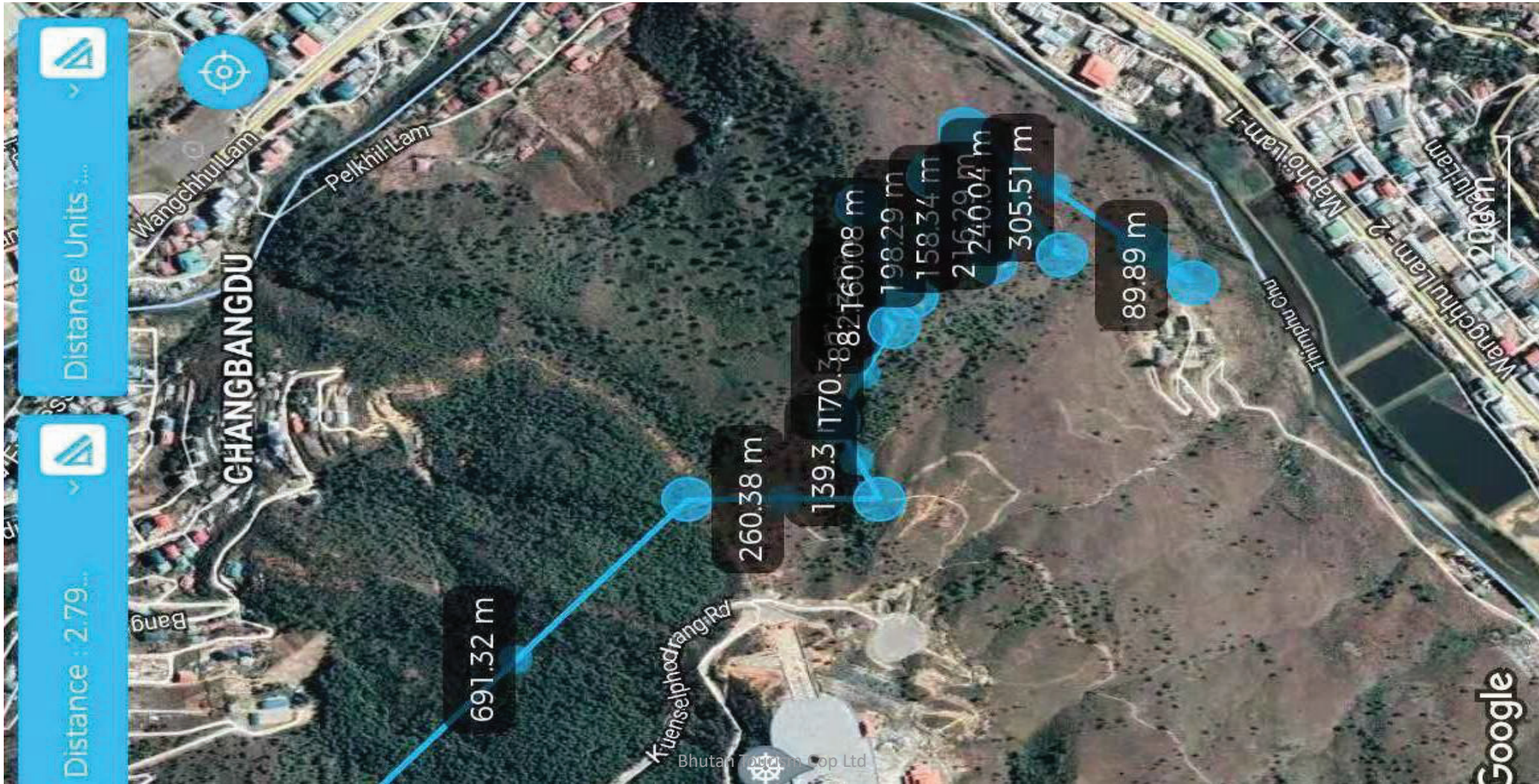


Kuenselpходrang to Draphu Chholing Nunnery



- Name of the Trail : Kuenselphodrang to Draphu Chholing Nunnery
- Time :30-45mintues (only by Bike)
- Distance:2.7km/ 1.6miles
- Starting :2400m/7874ft
- Highest point :2550m/8366ft
- Maximum temperature :20 °C/68 Fahrenheit
- Minimum temperature :15°C/59 Fahrenheit
- Altitude gain:150m/492ft
- Altitude Loss:315m/1033ft
- Ending point :2245m/7365ft
- Status :open
- Best season :January to December
- Grade : Easy